



WALLY FINDLAY GALLERIES INTERNATIONAL

New York

124 East 57th Street
New York, NY 10022
212-421-5390

Palm Beach

165 Worth Avenue
Palm Beach, FL 33480
561-655-2090

Los Angeles

421 N. Robertson Blvd
Los Angeles, CA 90048
310-248-4877

The Century Collection, Los Angeles

Avenue of the Stars
Century City, CA

Barcelona

Sant Cugat del Vallès
Barcelona, Spain



ERIK KOEPEL

The American Landscape

WALLY FINDLAY GALLERIES

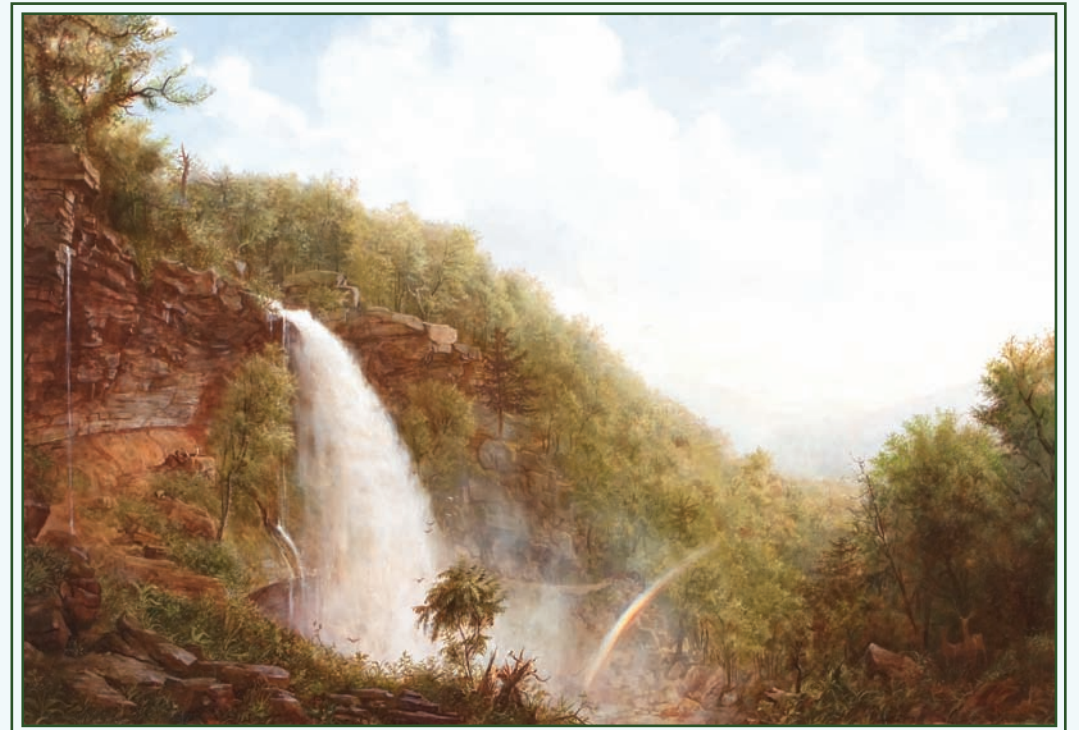
ERIK KOEPPPEL

While attending the Rhode Island School of Design, Erik studied with painter Seaver Leslie. As a result of his hard work and rising talent, Erik was honored with a summer apprenticeship at Seaver's studio on a farm in coastal Maine. This was as much a lesson in life as it was in painting. At the studio he performed exhaustive studies on advanced linear perspective, sacred geometry, and color theory, applying them both to studies in nature and to studio work constructed from his imagination. Most importantly, Erik cultivated an invincible drive for his work and in his words, "the ruthless perfectionism that is necessary to properly complete a painting." Upon seeing Koeppele's work it is clear to the viewer that he is an artist who has a deep understanding of the human figure and a complete grasp of the achievements and depth (both technical and emotional) of the Old Masters' work. This past summer Erik was awarded the Hudson River fellowship from the Institute of Classical Architecture and Classical America to study landscape painting in the Catskill Mountains - *The American Landscape* is the end result.



WALLY FINDLAY GALLERIES

presents



KAATERSKILL FALLS

48 x 72"

O/C

132831

ERIK KOEPPPEL

The American Landscape



132834 36 x 28" O/C

Morning Moon

“This painting is essentially an Arcadian view, with a memory of the Hudson River from on high. A celebration of a beautiful new morning, with the mysterious daytime moon hanging quietly above. A perfect reminder of the natural cycles of life.”



132833 20 x 29" O/C

Kaaterskill Clove from Inspiration Point

“Another evening view from a point made famous by S.R. Gifford’s painting of the clove which hangs in the Metropolitan Museum. As the sun sets, there is an incredible stillness.”

Kaaterskill Creek

“This site is downstream from the Kaaterskill Falls where it is shady and wet. In the manner of A.B. Durand, I was trying to simply study the poetic beauty of nature as closely as possible - the beautiful atmosphere of the forest interior against the vivid detail of an old birch trunk.”



132832 14 x 11" O/P



132840 22 x 28" O/C

A Morning Row

“Rowers coming in on a lovely light filled morning in a beautiful place. What more is there to say...”



132838

50 x 72" O/C

Rebirth: The Rising Sun after a Flood

"This painting was an epic mission of self-discovery for me, which I hope has revealed something universal about the human condition. I could write volumes about what this means to me and never finish."



132825

24 x 36" O/C

Kaaterskill Falls Evening

"These falls have a magical air about them and have been painted by many of the American greats. I found this epic view point which I believe has not been painted before. On this red earth ledge beneath a massive overhang for shelter I spent several weeks studying every aspect of this site. Sleeping behind the waterfall in the open air, it became a paradise for me-free from earthly troubles."



132843

30 x 40" O/C

Memory of Retiro

"This is a meditation on the nature of human activity. The park is a symbol of man's attempt to shape nature and the wildness surrounding it reveals his limitations. The glowing light on the fountain is the redemption in this picture; the beauty that divides us from our superficial goals."



132828

11 x 13" O/P

Bathers by the Creek

"This was begun from nature and completed in the studio. It is looking upstream from the top of Kaaterskill Falls. The bathers were added from memory and studies. I was struck by the glowing light on the fall and the warm atmosphere upstream."



132839

12 x 15" O/P

View from the Top of the Falls

"This painting was started in nature and completed in the studio. It is a memory of the evening light at the top of Kaaterskill Falls in the Catskills. The little rush of water at the bottom of the painting will fall 250 ft before rejoining the stream."

Notes 2009:



132830

32 x 41" MIXED/PAPER



132827

32 x 40" O/C

Apollo & Daphne

"My source for the myth of Apollo and Daphne was from Ovid's 'Metamorphosis'. In the painting I used the Mountain Laurel which is common in Connecticut and upstate New York and known for its bounteous early summer blossoms. Very significant to me in this myth is the nature of the transformation. Apollo is chasing Daphne out of passion, but when he touches her she transforms into the laurel and what he finds is a leaf that is ever green- the crown of the poet."