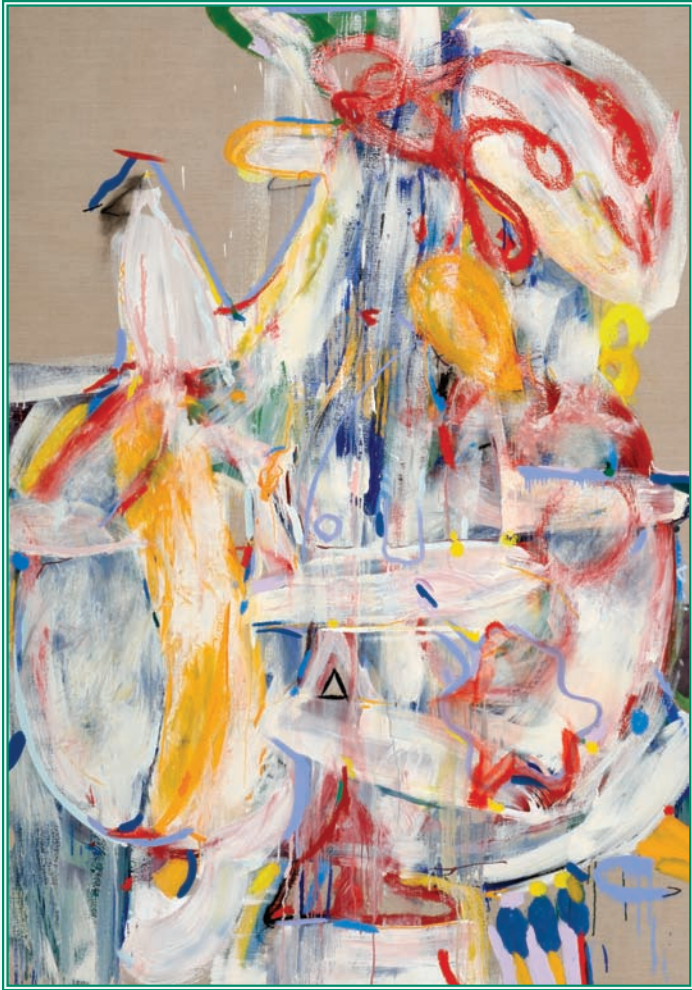


An abstract artwork featuring thick, expressive brushstrokes in white, light blue, and teal against a brownish-tan background. The composition is dense and layered, with some areas appearing more saturated than others. The overall effect is one of dynamic movement and texture.

PRISCILLA HEINE



FOUNDED 1827



Mr. Sweetlove, 2009

80 x 56"

O/L

133030



A Very Fine Woman, 2008

56 x 48"

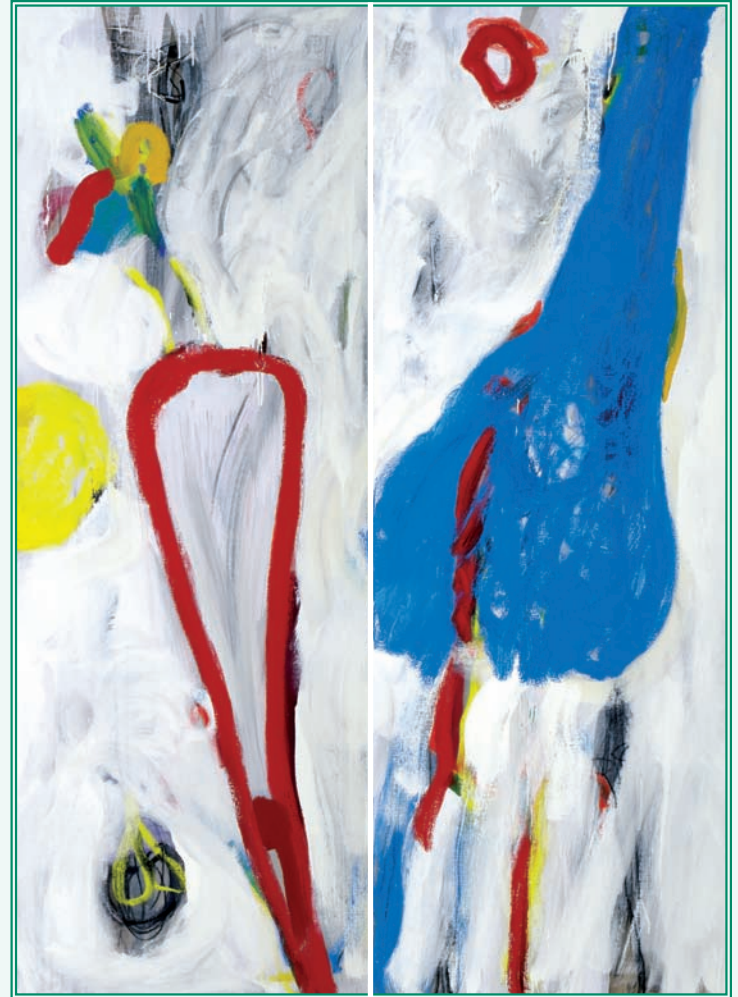
O/L

133029

Over the past three decades, Priscilla Heine has developed a potent visual language that is as flexible as it is complex, allowing her to assimilate both the immediate world and the internal world that emanates from within. Drawing from both sources, Heine's paintings are lyrical and romantic engaging in a dialogue with the present. Among dense tangles and strokes of pigment, bare linen and swirls of charcoal, her imagery erupts as painterly moments coalesce to create a whole.

The walls of her studio, are lined with lively canvasses, sprightly gnarls of fabric and stacks of books and drawings. Canny and intuitive, in her compositions Heine glides across color pools and stretches of raw canvas with a sort of old school bravura that is deeply satisfying. She is, in a word, fearless. In combining the elements of drawing, gesture and abstraction, she intuits her subject, giving character to the moments, places, objects and things that populate her canvases. Taken altogether, the works engage us in the very act of seeing as she locates meaning through the process of painting.

Priscilla Heine doesn't interpret the world around her so much as she absorbs it, bringing it to life with symbolic compositions inspired by a balance of internal and external influences.



Angel, 2008

80 x 58" (diptych)

O/L

133031



Birdland, 2009 60 x 48" O/L 132778

Cover Image Detail:
Under the Lilies, 2009 80 x 68" O/L 133111

© Published April 4, 2010. PB. No part of the images or text represented in this catalogue may be duplicated without prior written permission of Wally Findlay Galleries International Inc. All dimensions noted are approximate canvas sizes.

WALLY FINDLAY GALLERIES
165 WORTH AVENUE
PALM BEACH, FL 33480
561-655-2090
WWW.WALLYFINDLAY.COM

Priscilla Heine *The Museum Collection*

Palm Beach Exhibition on View April 4, 2010

This exhibition is accompanied by a full color catalogue.

To request a complimentary copy, please contact the gallery
or send an email request to catalogues@wallyfindlay.com