

An impressionistic painting featuring a vibrant, textured scene. On the left, a large bouquet of purple and red flowers with green leaves is rendered with thick, expressive brushstrokes. In the center, a vertical element, possibly a pillar or a draped fabric, is painted in warm, golden-yellow and orange tones. To the right, a large, draped fabric in shades of pink, red, and white dominates the foreground. The background is a mix of soft, blended colors, including blues, greens, and pinks, suggesting an interior space. The overall style is highly textured and colorful, characteristic of Impressionism.

**HUGO GRENVILLE
INTIMATE INTERIORS**

HUGO GRENVILLE b. 1958.



DISTINGUISHED COLLECTIONS

- Edinburgh City Council
- The Worshipful Company of Ironmongers
- The Ministry of Defence
- The China Club, Hong Kong
- The Tresco Estate
- Pembroke Management
- The Duke of Devonshire
- Searcy's
- Duke's Hotel St James's
- The Earl of Verulam

Although he first exhibited in London at the Chelsea Arts Society at the age of 15, it took him another 14 years to become a full time painter. After leaving school he backpacked across India, ran out of money, joined the British Army as a member of the Coldstream Guards, and served as an officer in Northern Ireland, West Africa, Zimbabwe during the Civil War, and finally as an Aide de Camp in the Rhine, during which time he painted whenever possible and studied part-time at the Chelsea school of Art and Heatherley's. Working first in advertising and then as an art dealer he finally submitted to the need to paint full time in 1989.

Since then he has held 14 One Man Shows, has painted portraits of leading figures including the late Archbishop of Canterbury, has been an Official War Artist in Bosnia, writes regularly for *The Artist* magazine and lectures in London and at his summer school on color and Twentieth Century painting.

During the past 20 years he has exhibited at the Royal Society of British Artists, Royal Institute of Painters, Chelsea Arts Club and numerous other galleries including Messum's on Cork Street in London. Most recently one of his paintings was chosen as a centerpiece for a library in the annual Kips Bay Decorator's showcase in New York.



BATHERS AT WHITE SANDS BEACH, PEMBROKESHIRE I
28 X 34 IN. OIL ON CANVAS 133660



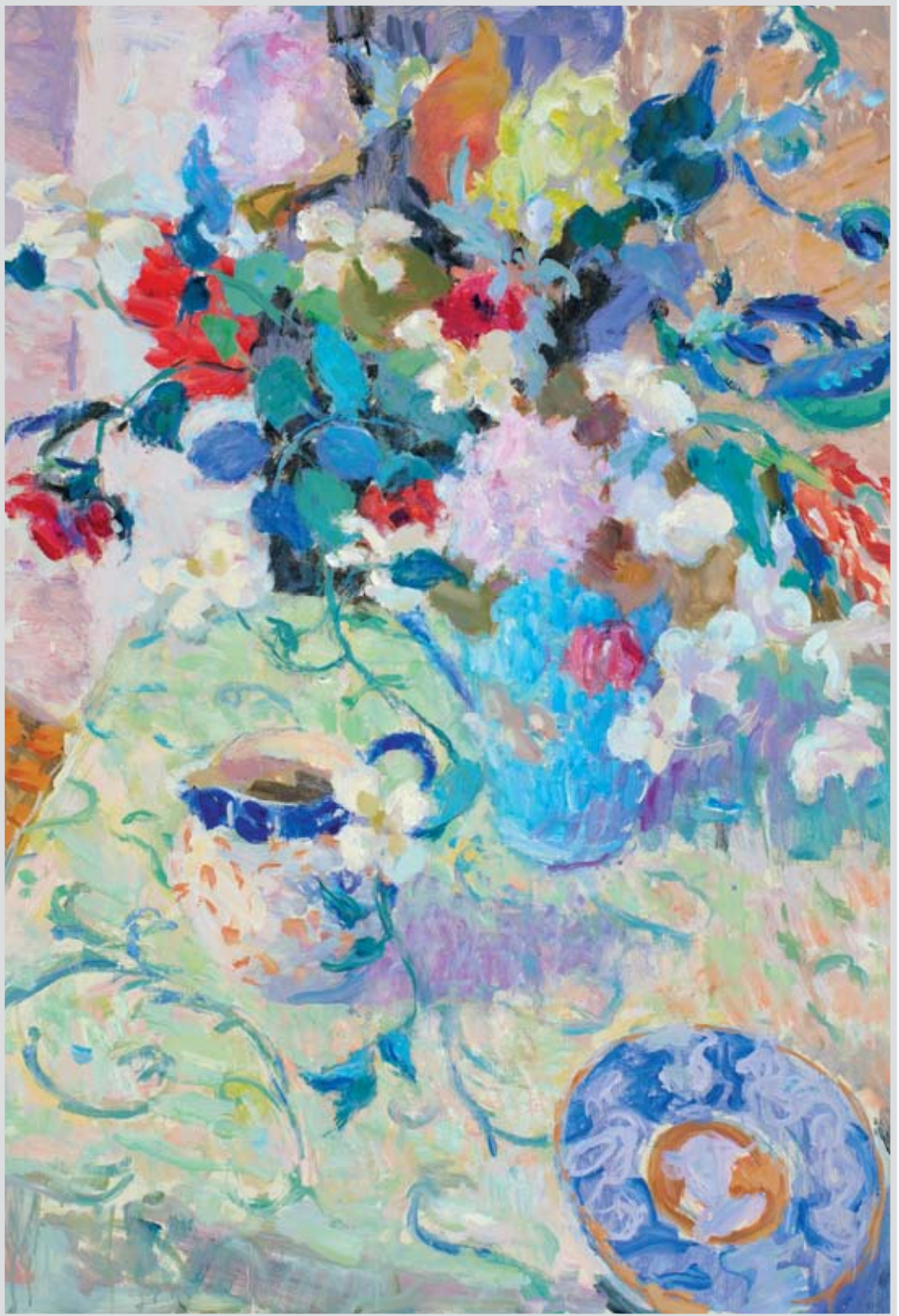
CROSSING THE BLYTH AT WALBERSWICK
19 X 26 IN. OIL ON BOARD 133682



TRESCO GARDENS, EASTER LATE AFTERNOON
48 X 52 IN. OIL ON CANVAS 133672



THE VASE OF FLOWERS, LATE WINTER LANDSCAPE
38 X 46 IN. OIL ON CANVAS 133668



STILL LIFE IN PINK AND BLUE II
36 X 28 IN. OIL ON CANVAS 133662



SLEEPING NUDE WITH ALSTROMERIA
36 X 44 IN. OIL ON CANVAS 133659



FIGURE SEATED ON PINK SOFA
36 x 34 OIL ON CANVAS 130269