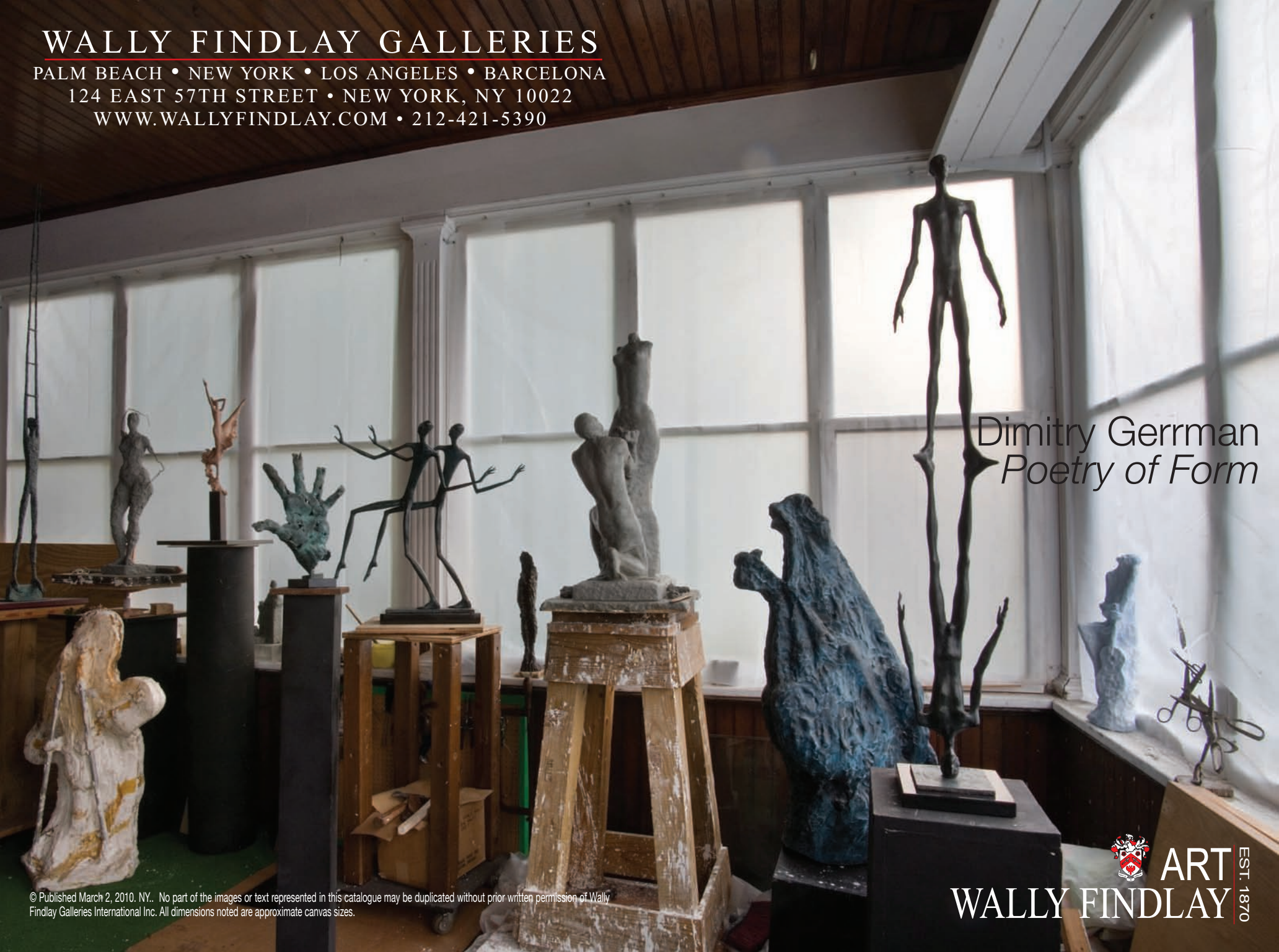


# WALLY FINDLAY GALLERIES

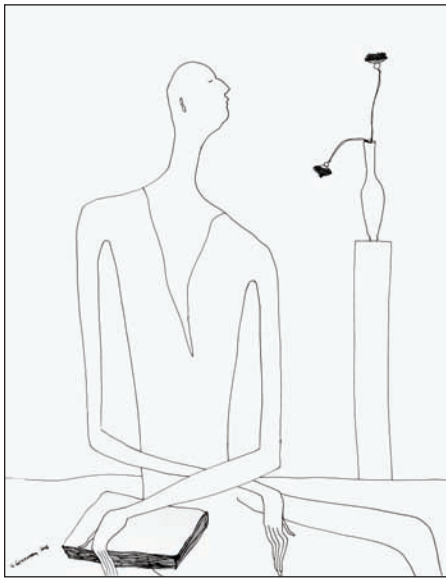
PALM BEACH • NEW YORK • LOS ANGELES • BARCELONA

124 EAST 57TH STREET • NEW YORK, NY 10022

WWW.WALLYFINDLAY.COM • 212-421-5390



Dimitry Gerrman  
*Poetry of Form*



Lonely Poet, 2006  
23 x 18"

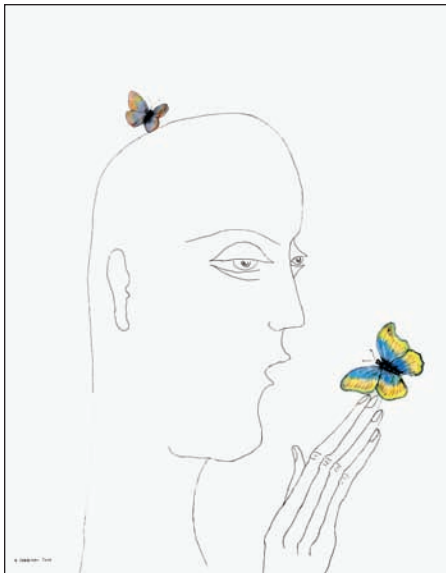
Pen Ink/Paper  
133038



The Kiss, 1999  
23 x 18"

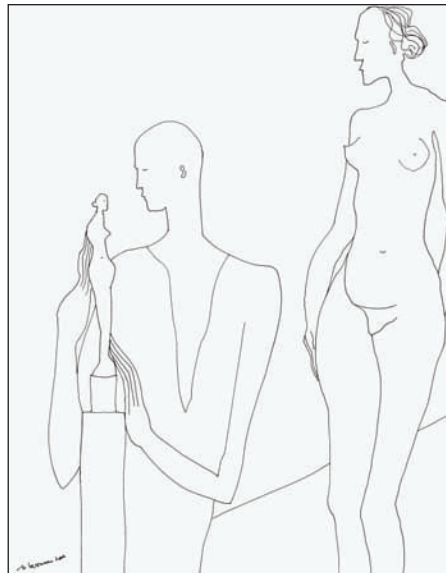
Pen Ink/Paper  
133037

# Dimitry Gerrman



Divine Butterfly, 2009  
30 x 22"

Pen Ink/Paper  
133066



Sculptor & Model, 2006  
23 x 18"

Pen Ink/Paper  
133040



Circle of Time, AP2

Bronze

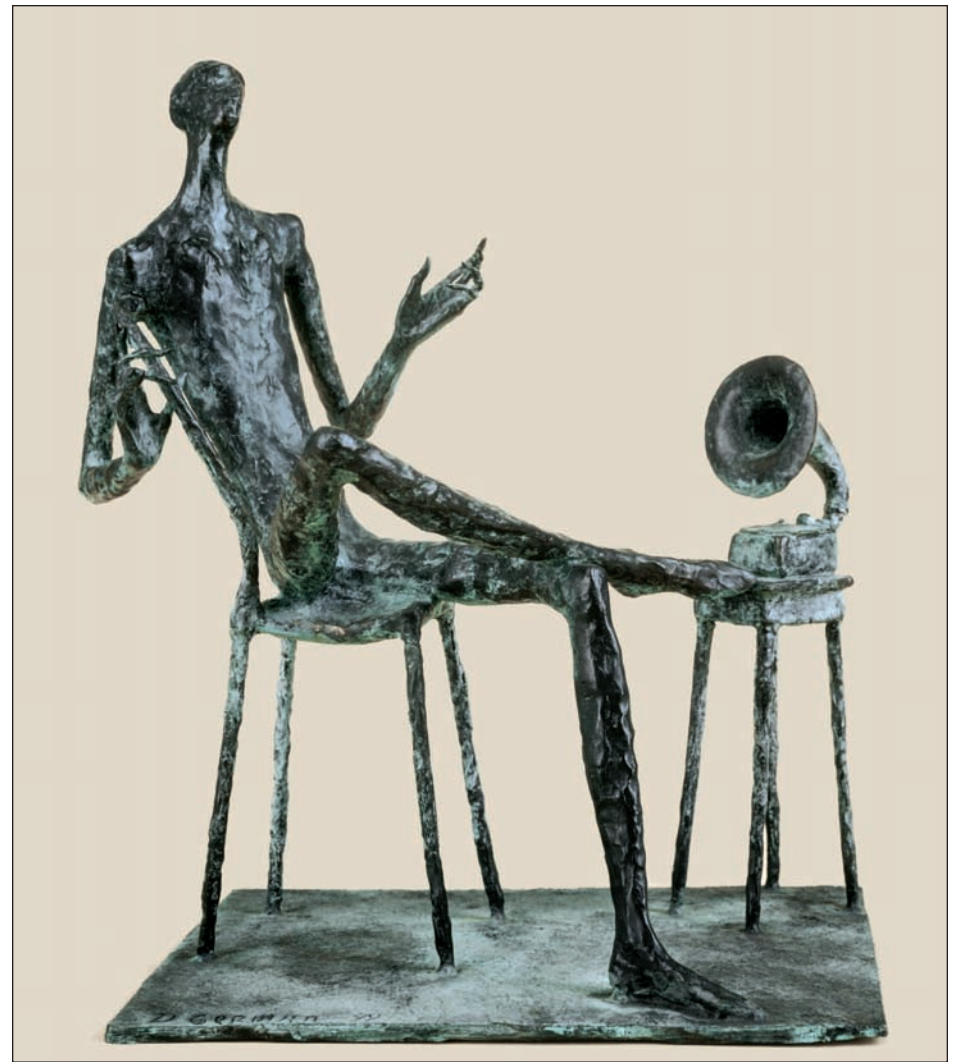
40"

130512

Dimitry Gerrman was born in 1955 in Gomel, Belorussia, USSR; a child of communist Russia. Despite the constraints of a communistic era, at an early age he became interested in sculpture and drawing. As a testament to his remarkable skill, at seven he completed his first sculpture and at 12 he was recognized at the 1967 National Exhibition of Youth Art in Moscow with a Gold Medal for his line etching, "Self Portrait".

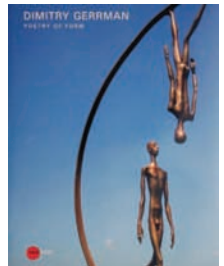
Now over 50 years later, Wally Findlay Galleries is taking inspiration from these early years and is pleased to present Gerrman's first exhibition of both sculpture and drawing. The juxtaposition of Dimitry's works on paper with his sculptures lures one beyond the edge of a sculptor's chisel to reveal the underlying line from which the sculpture is born. The simplicity of the unending line conveyed in one-dimension through ink on paper complies effortlessly with the simplicity of form born in a three-dimensional bronze. Inspired in his twenties by Rodin sculptures at the Hermitage Museum in St. Petersburg, Gerrman continues to explore the French master's abstraction of form and expressionistic modeling. In doing so, he has recast the old traditions into a contemporary mold. To have the chance to admire and contemplate these line drawings alongside sculpture is to glimpse inside the mind of a creative at work. The result is poetry.

Even today on a visit to Russia one can admire Dimitry's imprint on his country. In St. Petersburg a life-size equestrian statue stands proudly in the center of the city while further a field in Siberia, both his Monument to the Victims of World War II and eight life-size figures at The Sports Center honor his skill and passion which began at 7 years of age.



Above: Old Melody, 3/7	Bronze	18 x 10 x 13"	129269
Left: Man and the Sea, 1/7	Bronze	13 x 33 x 8"	130932

Now available at Wally Findlay Galleries  
 Gerrman's recently published 112 pg.  
 full color book, "Poetry of Form"





Above: Secret, 2003	Marble	9 x 14 x 10"	133100
Left: Meditation, 6/7, 1998	Bronze	62 x 7 x 6"	132937
Below: Tunnel	Marble	10 x 10 x 8"	131633

