



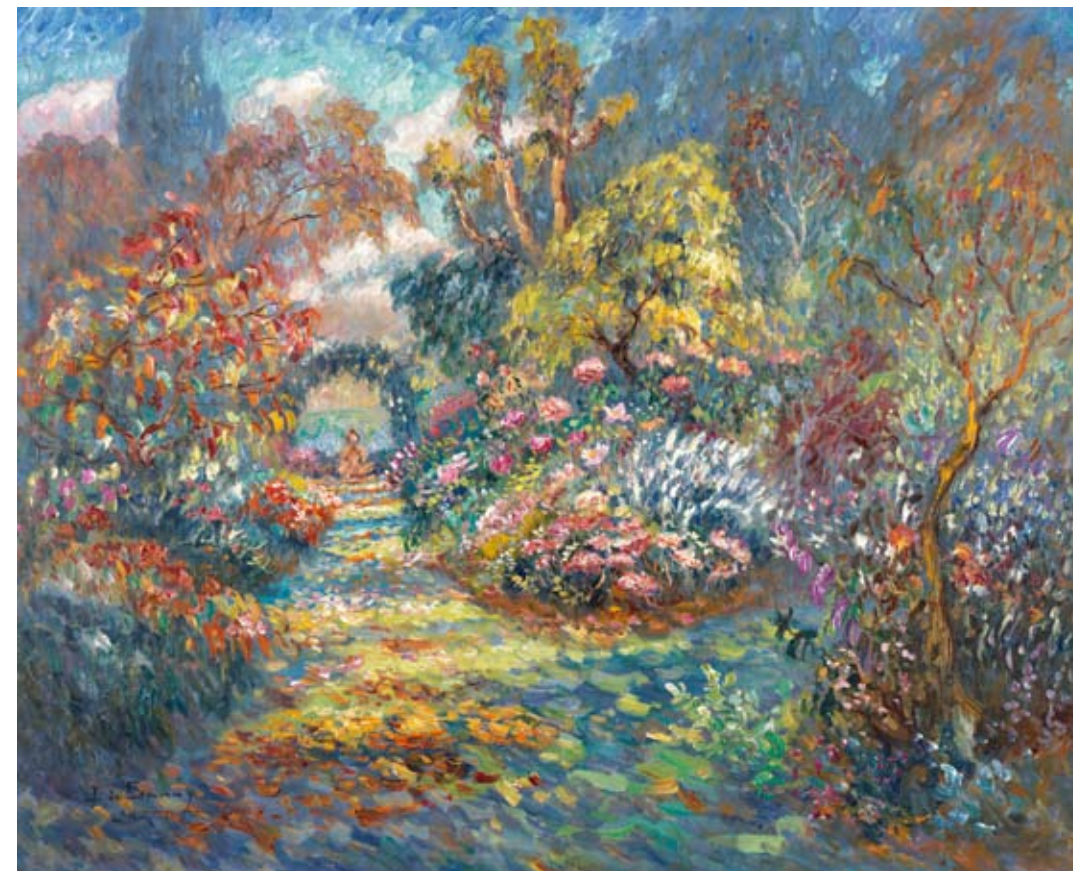
WALLY FINDLAY GALLERIES INTERNATIONAL, INC.

EST. 1870
ART
WALLY FINDLAY

BEYOND THE MOMENT



BRUME SUR ROUEN - 23 x 36 in. - O/C - 133287



NEW YORK • PALM BEACH • LOS ANGELES • BARCELONA
124 East 57th Street, New York, NY 10022 Tel: 212-421-5390 • Fax: 212-838-2460
165 Worth Avenue, Palm Beach, FL 33480 Tel: 561-655-2090 • Fax 561-655-1493
www.wallyfindlay.com

MAÎTRE DE L'ÉCOLE DE ROUEN
ISABELLE DE GANAY

WALLY FINDLAY GALLERIES

PRESENTS

MAÎTRE DE L'ÉCOLE DE ROUEN

ISABELLE DE GANAY

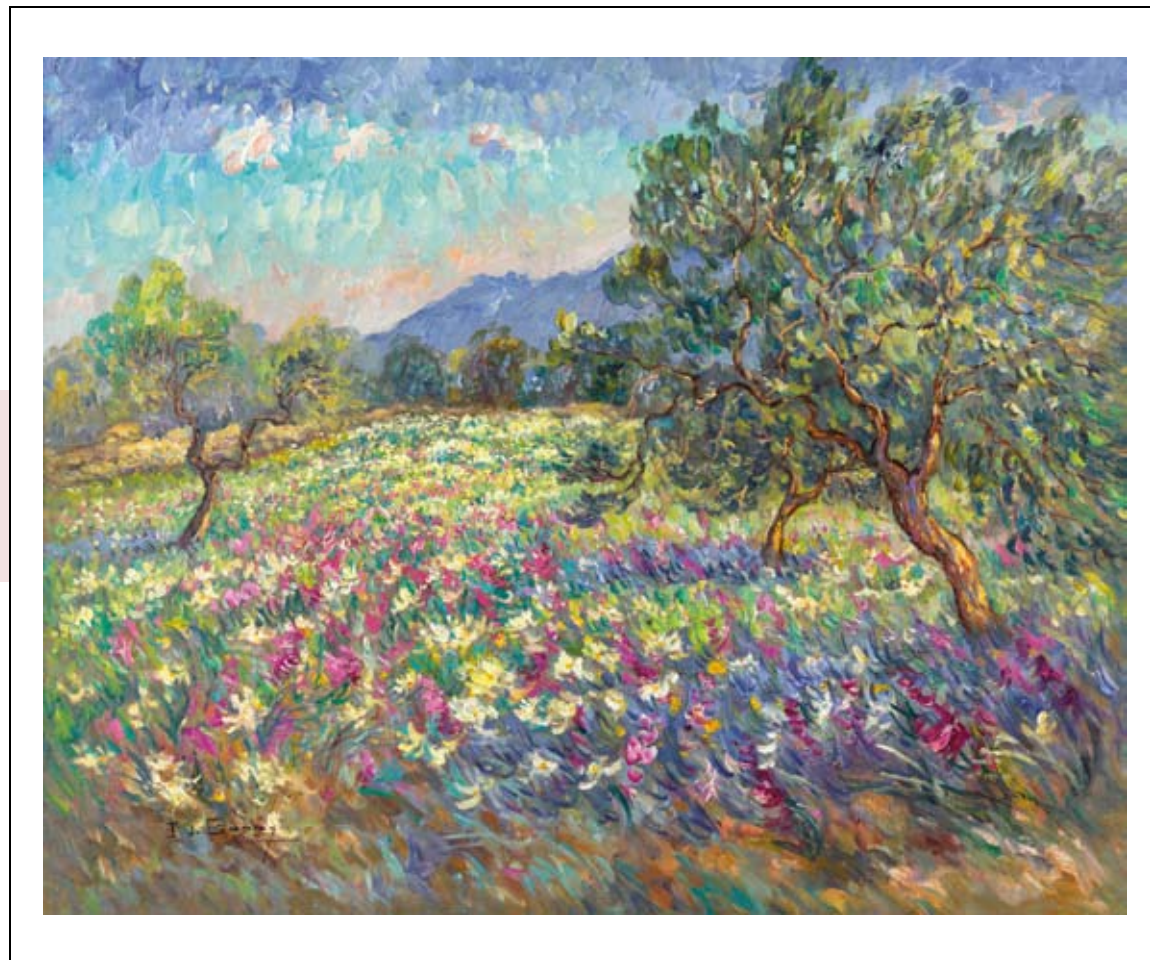
AND A COLLECTION FROM AN IMPRESSIONIST'S JOURNEY

BEYOND THE MOMENT

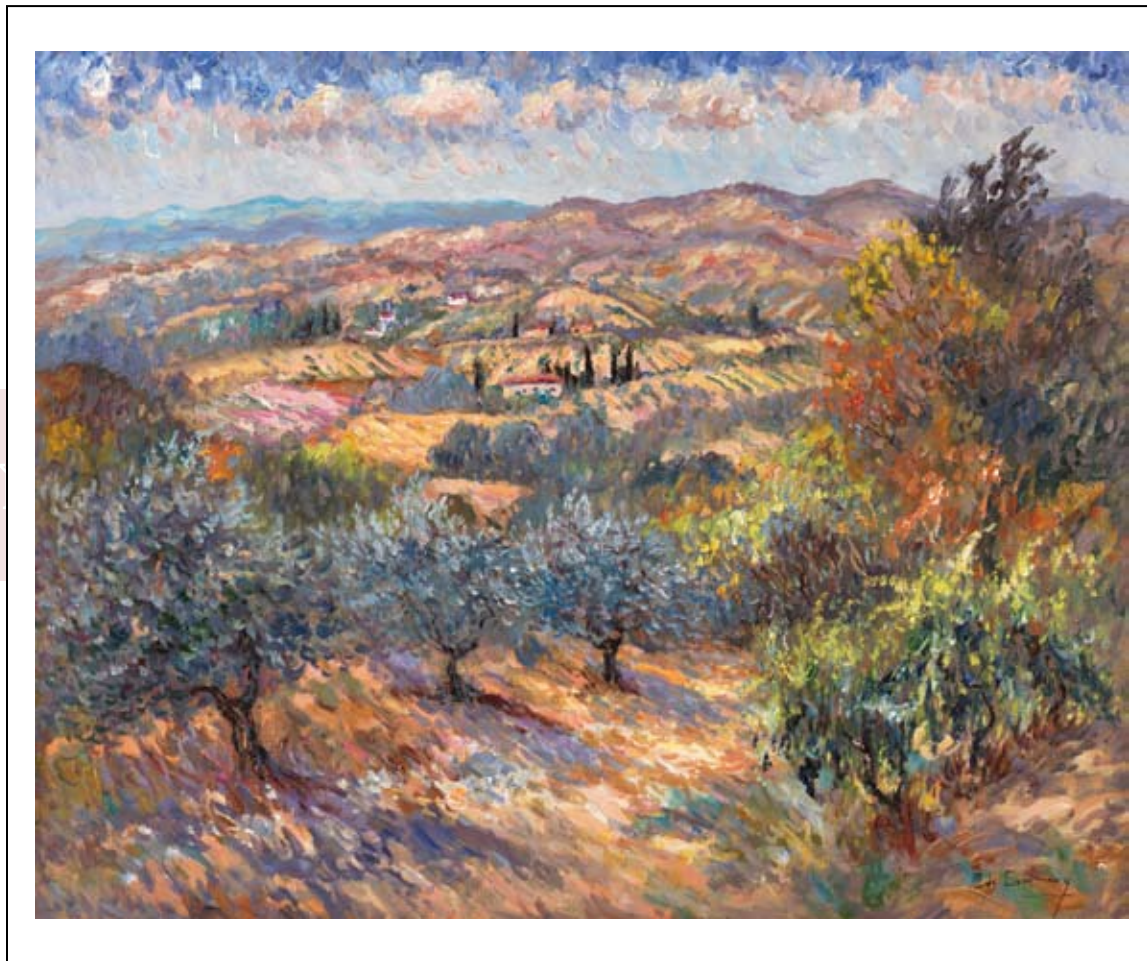
OCTOBER 6TH THROUGH NOVEMBER 4TH 2010

124 EAST 57th STREET, NEW YORK, NY 10022

212 421 5390



MARGUERITES ET GLAÏEULS SAUVAGES - 28 X 36 in. - O/C - 133284



VILLAGE DE PASTINE - 28 x 36 in. O/C - 133286

Isabelle de Ganay was born in Rouen in 1960. There she discovered the same magic of the Normandy landscape that inspired the great names in Impressionism - Monet, Renoir and Sisley. Isabelle, brought up in a family who for generations adored art, was a sensitive child, instinctively drawn to beauty. Her great-grandmother, Countess Martine de Behague, was one of the great art patrons of the twenties. Her splendid collection included the works of Leonardo de Vinci, Titian, Durer and Monet; works which can now be enjoyed at the Louvre.

Isabelle is a true disciple of le plein air, painting outside in all weather to more fully sense the influence of changes in the atmosphere, the vibrations of the air and the varying light in order to seize and translate to canvas the ephemeral moment. Never betraying the spirit of her work, Isabelle can be found traveling France looking for the light, which illuminates her canvasses, dense with warm colors. Isabelle de Ganay has had numerous successful exhibitions throughout Europe. Her position as a member of the Artistes de Francais and the presence of her works in prestigious collections across France and the rest of the world, is affirmation of her continually expanding reputation as one of the true classic Impressionist painters. Isabelle is married to Baron Philippe de La Pomelie who is a descendent of the General Marquis de La Fayette and, therefore, an honorary citizen of the United States of America. He takes an active role in Isabelle's career, not only as an admirer, but discerning critic, invaluable advisor and essential organizer of her

many successful exhibitions. They have two sons, Constant and Melchior, who have inherited from their parents a love of Normandy and the outdoors. Wally Findlay Galleries is proud to have the opportunity to present this uniquely talented and highly praised French artist.

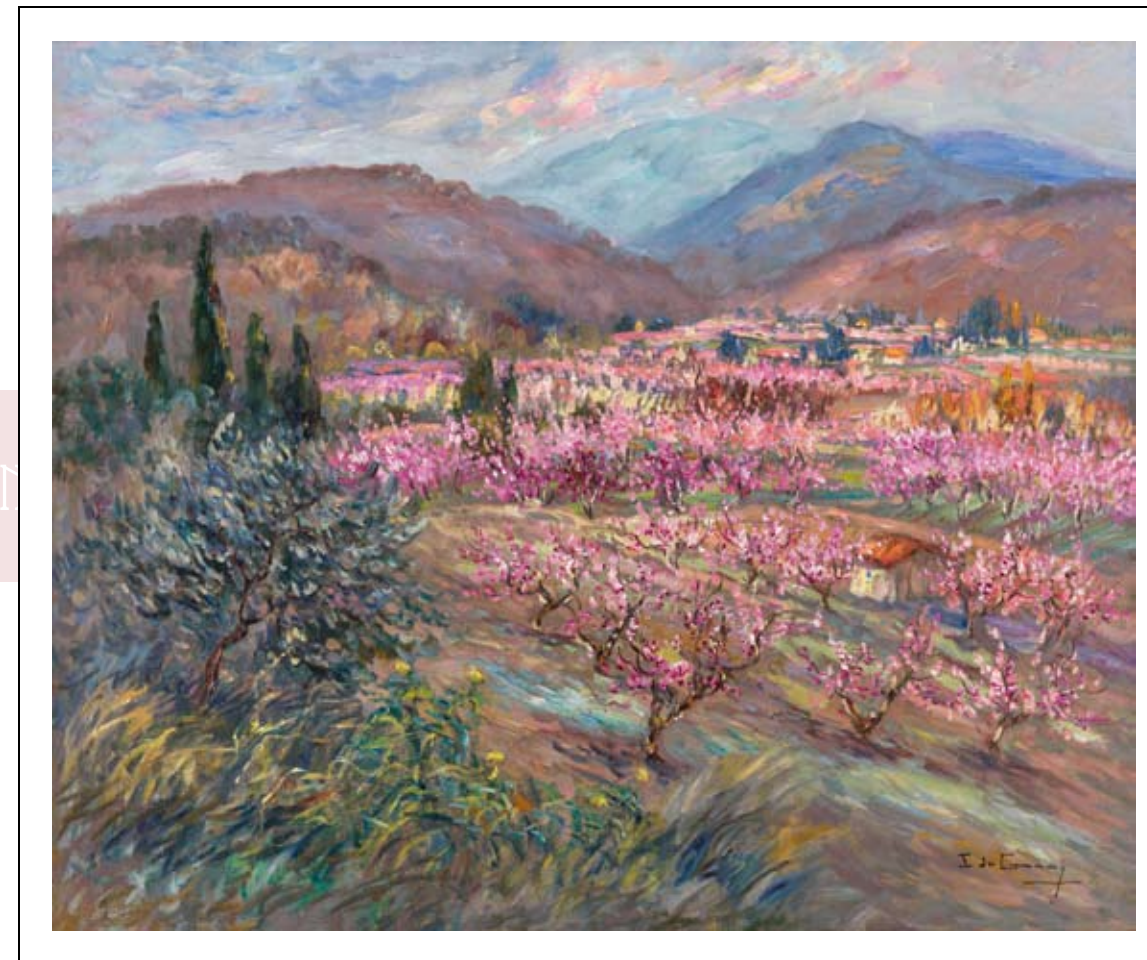


COMPOSITION DE HOUX 28 X 23 in. - O/C - 133265

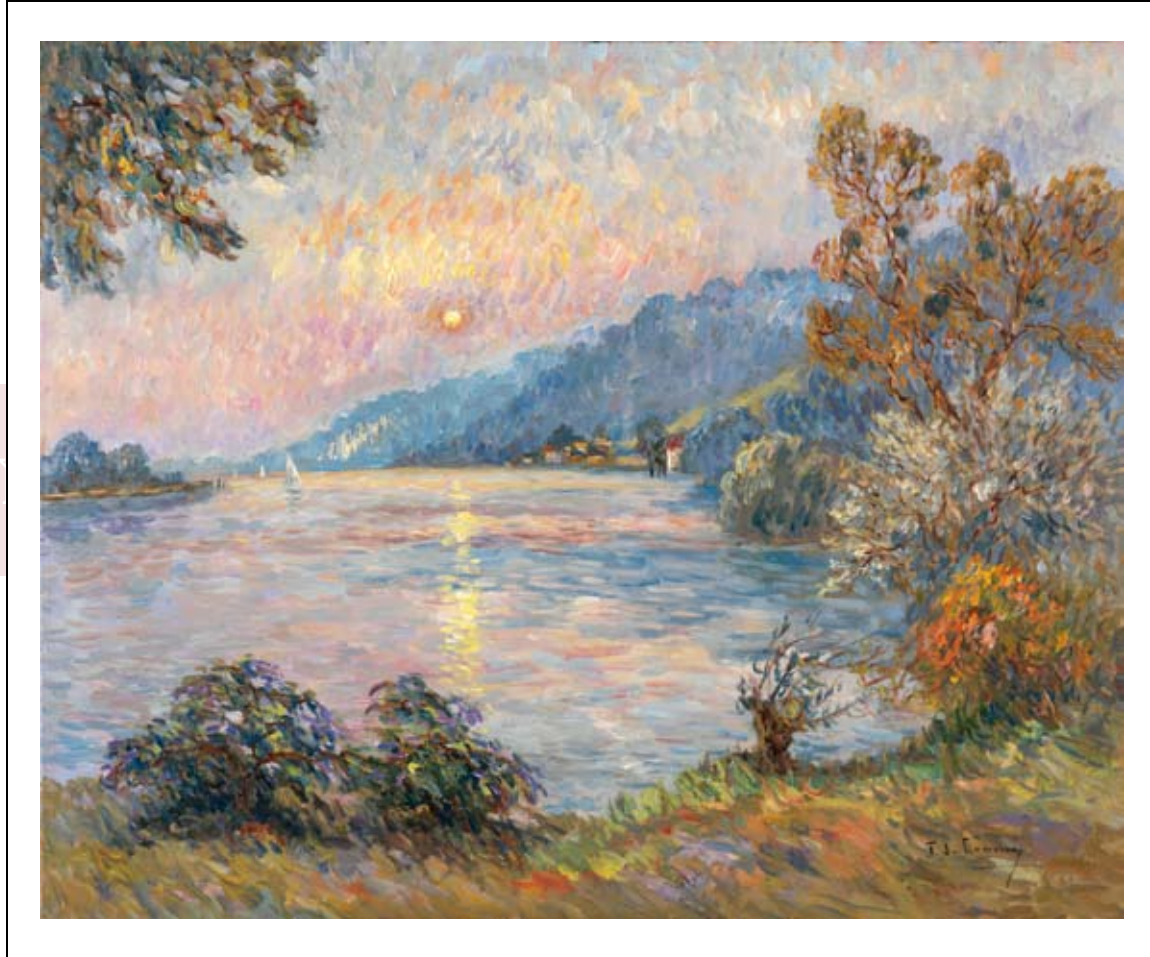
“What I wish above all, is to continue progressing. In order to be ever closer to nature, and to better translate it onto canvas. One doesn't impose oneself on a subject. It is futile to take up the brushes if you haven't felt the emotional impact, which leads to creation. As for me, it is in nature that is born the irresistible desire to paint.”



MAISON MAJORQUINE - 25 x 31 in. O/C - 133281



PANORAMA VERS ILLE-SUR-TÊT - 25 X 31 in. - O/C - 133272



VUE VERS VILLEQUIER- 31 X 39 in. - O/C - 133288

MOMENT



PROMENADE SUR LA SEINE - 25 X 39 in. - O/C - 133293



LE CARGO EN SEINE - 25 X 39 in. - O/C - 133292



CAMPAGNE EN TOSCANE - 25 X 31 in. - O/C - 133280



CHEMIN DANS LES PÊCHERS - 23 X 28 in. - O/C - 133266



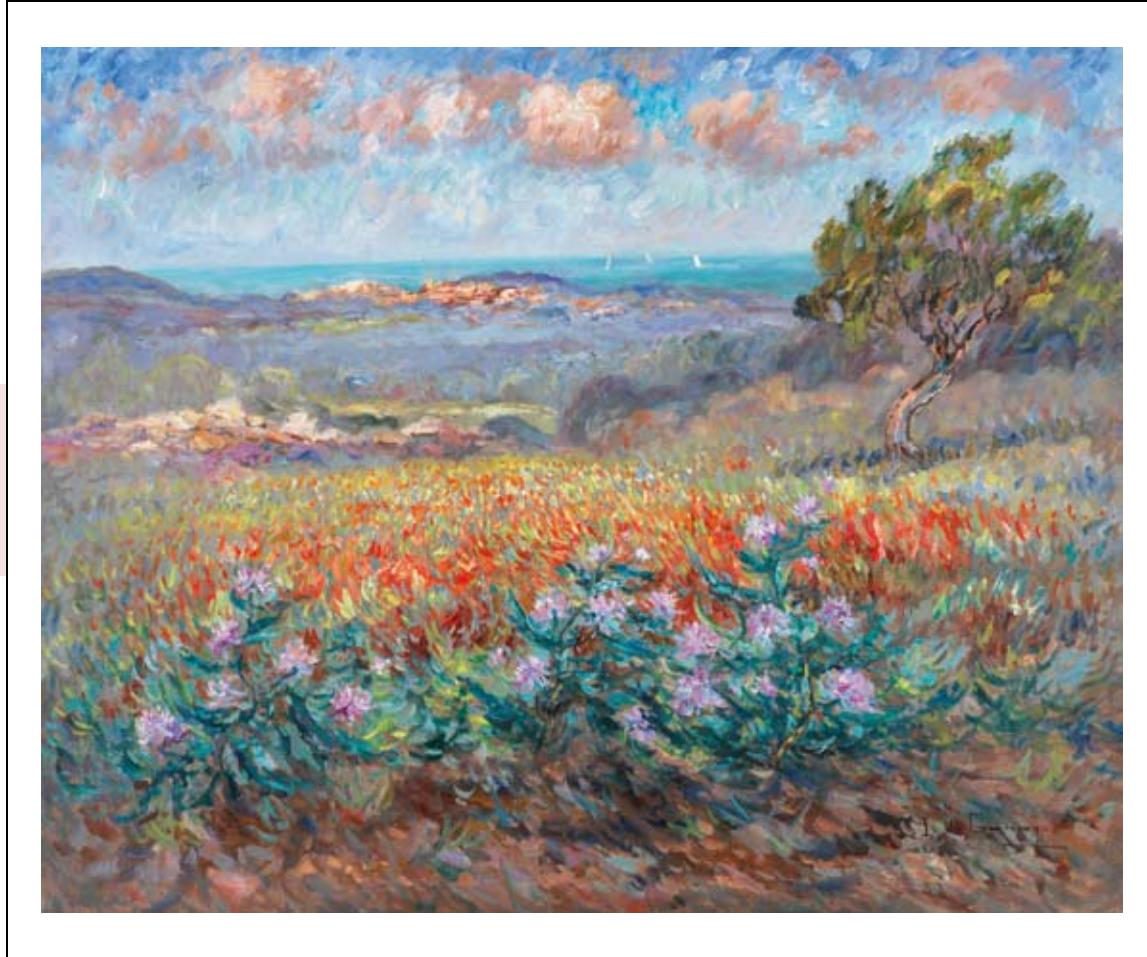
FLEURS PRINTEMPS - 21 X 25 in. - O/C - 133259



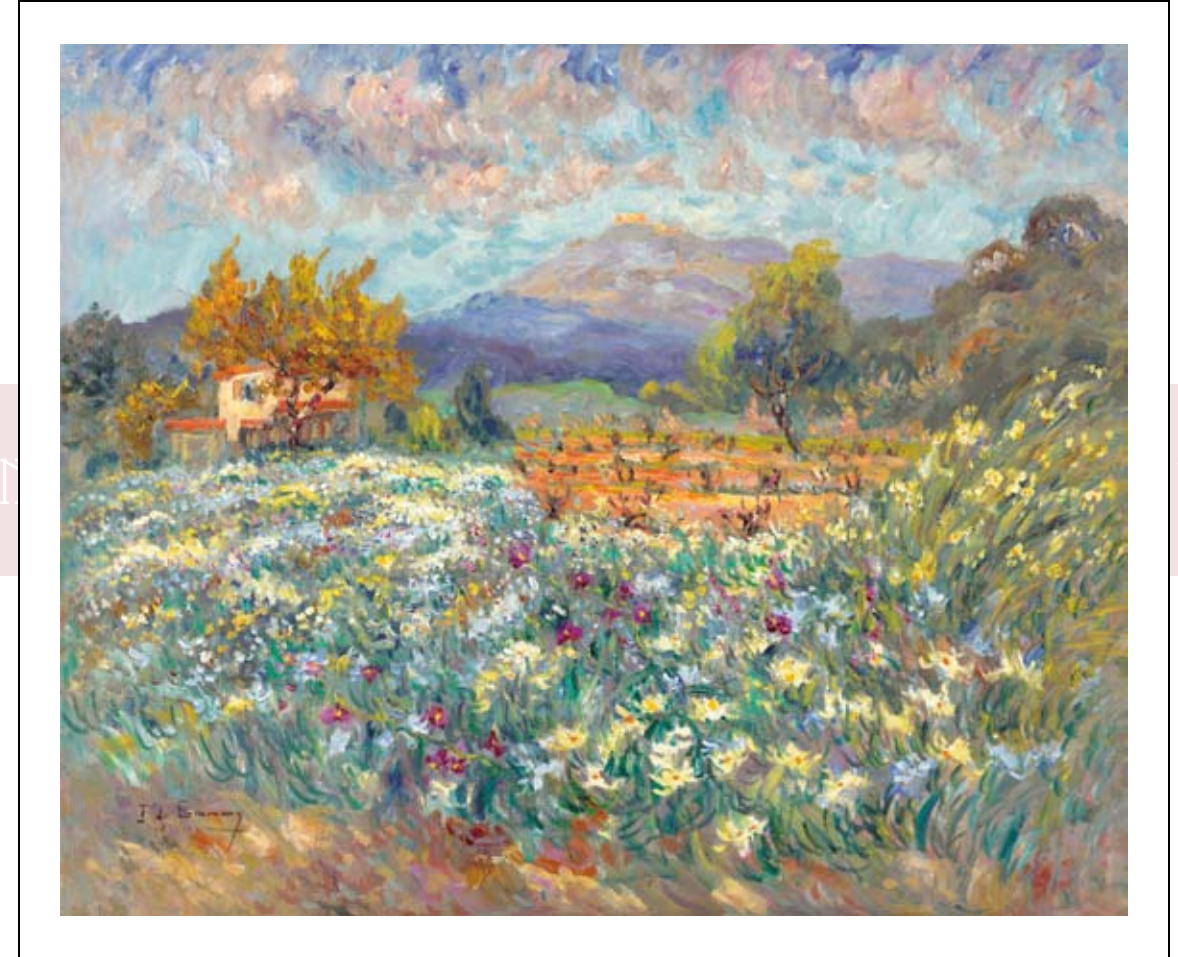
AZALÉES ET AIL SAUVAGE - 25 X 31 in. - O/C - 133277



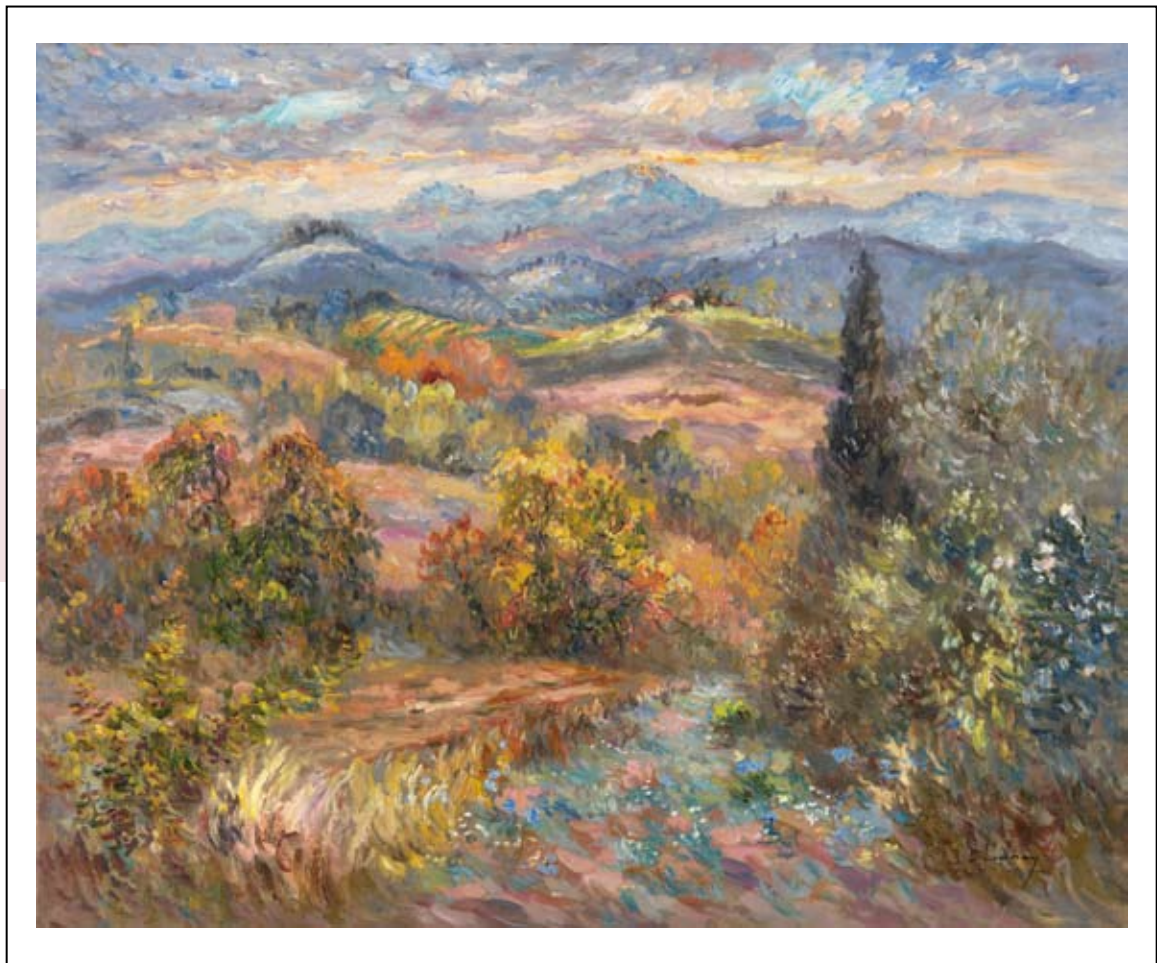
CHAMPS DE COQUELICOTS - 23 X 28 in. - O/C - 133263



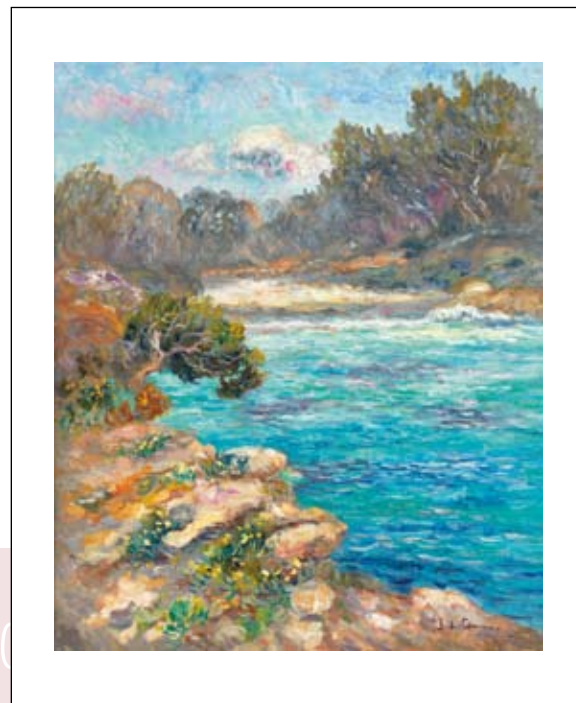
PANORAMA SUR CALONGE - 25 X 31 in. - O/C - 133278



PETIT CHAMPS DE VIGNE - 23 X 28 in. - O/C - 133270



SPLendeur TOSCANE - 31 X 39 in. - O/C - 133289



CALA A MAJORQUE 25 X 21 in. - O/C - 133261



ALLÉE DE MIMOSA 28 X 31 in. - O/C - 133282

EXHIBITIONS

- 1985 Salle Siegfried
- 1986 Galerie Sautreuil, Saint Wandrille Rancon
- 1987 Salon des Artistes Francais
Salon de Pontoise
Societaire des Artistes Francais
- 1988 Galerie Wallet-Fouque, Amiens
- 1989 Galerie du Moulin Saint Dominique, Aumale
Fondation Princesse Tran Chateau de Pinterville
- 1990 Galerie du Chenil, Grainville, Ymauville
Galerie de la Vielle, Ville, Geneva
- 1991 Galerie Gericault, Rouen
Salon de Mars, Paris
"Art au Plaza" Plaza Athenee, Paris
Galerie Alain Letailleur, Paris
- 1992 "La Galerie", London
Conseil General de Rouen
Galerie de la Vielle, Ville, Geneva
- 1993 Galerie Katia Granoff, Honfleur
Selective Eye Gallery, Jersey
Conseil General de l'Essonne
Galerie Marie Jane Garoche, Paris
- 1994 "La Galerie", London
The China Club, Hong Kong
Chateau de Vologne, Fondation La Fayette
- 1995 Galerie Marie Jane Garoche, Paris
Galerie du Chenil, Grainville, Ymauville
Galerie Wallet Fouque, Amiens
- 1996 "La Galerie", London
Musee de Jersey, Jersey
Galerie de la Vielle Ville, Geneva
- 1997 Galerie de l'Estuaire, Le Havre
Galerie Tuffier, Les Andelys
Chateau d'Etelan, Saint Maurice d'Etelan
- 2006 La Galerie, London

1997 - 2010

Wally Findlay Galleries International